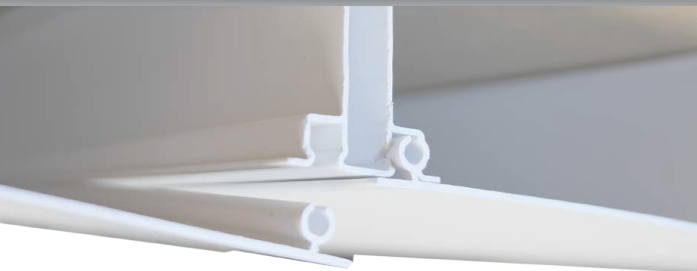


INTERLOCKING DESIGN

EASY INSTALLATION

**ZIPUP
HAS IT COVERED!**



- Durable PVC Compound
- 3 Interlocking Components
- Appealing Finished Look
- Fast & Easy Installation
- Water Tight
- Easy Mechanical Access
- Hurricane Tested
- Will Not Stain or Discolor
- Will Not Rust or Corrode
- Mold & Mildew Resistant
- Easy to Clean
- Class A Fire Rated
- Latex Paintable
- 25 Year Warranty



view our install videos online at ZipUpCeiling.com



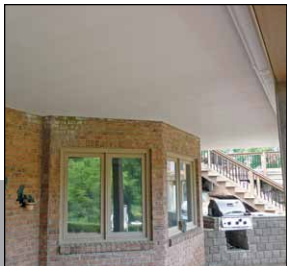
EXTERIOR



COMMERICAL



INTERIOR



zipUP
CEILING® AND UNDERDECK®

www.ZipUpCeiling.com • 888.449.4787



zipUP
CEILING® AND UNDERDECK®



Members of NADRA and AWC1

www.ZipUpCeiling.com • 888.449.4787

3 MAIN INTERLOCKING COMPONENTS

OPTIONAL SYSTEM PARTS

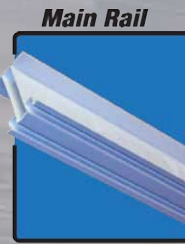


**A Revolutionary
Water-Tight System for
Interior & Exterior Applications**



Wall Trim

Wall Trim:
Attaches to wall structure.
12' length



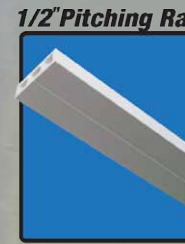
Main Rail

Main Rail: Vital beams of the system which locks into the wall trim.
12' and 16' lengths



Ceiling Panel

Panel: The visible surface that locks into the rails & wall trim.
1' Width
12' & 16' lengths

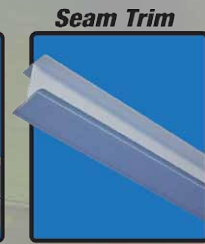


1/2\" Pitching Rail

Pitching Rail: Produces proper slope for water drainage in Underdecks.
pitch.
12' length



1\" Pitching Rail



Seam Trim

Seam Trim:
Extends system to further lengths.
12' length

UNIQUELY DESIGNED WITH SIMPLICITY IN MIND.

COMMERCIAL SPACE



BEFORE



AFTER

WALK WAYS & SOFFITS



BEFORE



AFTER

CAR WASH BAYS



BEFORE



AFTER

UNDERDECKS

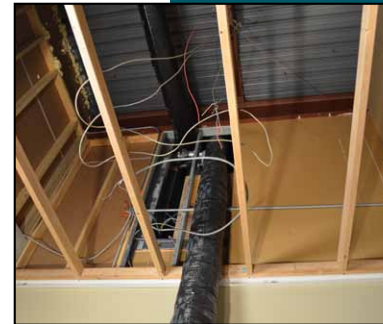


BEFORE



AFTER

INTERIOR CEILINGS



BEFORE



AFTER