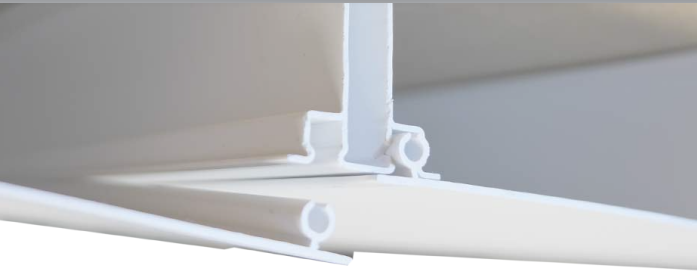


**INTERLOCKING DESIGN**

**EASY INSTALLATION**

**ZIPUP  
HAS IT COVERED!**



- Durable PVC Compound
- 3 Interlocking Components
- Appealing Finished Look
- Fast & Easy Installation
- Water Tight
- Easy Mechanical Access
- Hurricane Tested
- Will Not Stain or Discolor
- Will Not Rust or Corrode
- Mold & Mildew Resistant
- Easy to Clean
- Class A Fire Rated
- Latex Paintable
- 25 Year Warranty



view our install videos online at [ZipUpCeiling.com](http://ZipUpCeiling.com)



**EXTERIOR**



**COMMERICAL**



**INTERIOR**



**zipUP**  
CEILING® AND UNDERDECK®



**zipUP**  
CEILING® AND UNDERDECK®

[www.ZipUpCeiling.com](http://www.ZipUpCeiling.com) • 888.449.4787

**MP** global products L.L.C.

**MP** global products L.L.C.

Members of NADRA and AWC1

[www.ZipUpCeiling.com](http://www.ZipUpCeiling.com) • 888.449.4787

## 3 MAIN INTERLOCKING COMPONENTS

## OPTIONAL SYSTEM PARTS

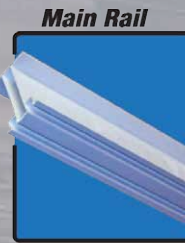


**A Revolutionary  
Water-Tight System for  
Interior & Exterior Applications**



**Wall Trim**

**Wall Trim:**  
Attaches to wall structure.  
12' length



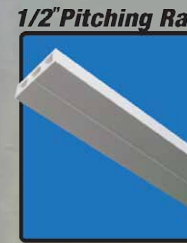
**Main Rail**

**Main Rail:** Vital beams of the system which locks into the wall trim.  
12' and 16' lengths



**Ceiling Panel**

**Panel:** The visible surface that locks into the rails & wall trim.  
1' Width  
12' & 16' lengths

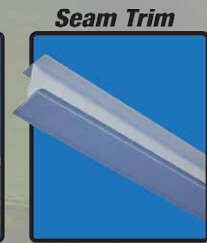


**1/2\" Pitching Rail**

**Pitching Rail:** Produces proper slope for water drainage in Underdecks.  
pitch.  
12' length



**1\" Pitching Rail**



**Seam Trim**

**Seam Trim:**  
Extends system to further lengths.  
12' length

**UNIQUELY DESIGNED WITH SIMPLICITY IN MIND.**

### COMMERCIAL SPACE



BEFORE



AFTER

### WALK WAYS & SOFFITS



BEFORE



AFTER

### CAR WASH BAYS



BEFORE



AFTER

### UNDERDECKS

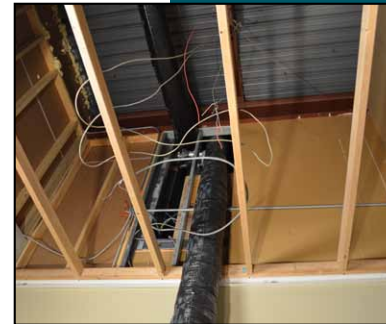


BEFORE



AFTER

### INTERIOR CEILINGS



BEFORE



AFTER