

Make The Most Of Your Space

ZipUP
CEILING® AND UNDERDECK®

CEILING SYSTEM
UNDERDECK WATER MANAGEMENT SYSTEM
WATERPROOF LOW VOLTAGE LIGHT KITS

www.ZipUPCeilings.com



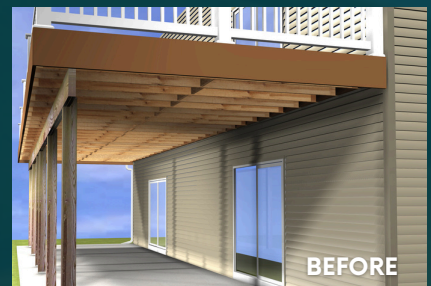
ABOUT ZIP•UP CEILINGS® & UNDERDECK®

Zip•UP Ceilings® and UnderDeck® is an innovative panel system designed to easily finish ceilings and divert water from outdoor decking areas.

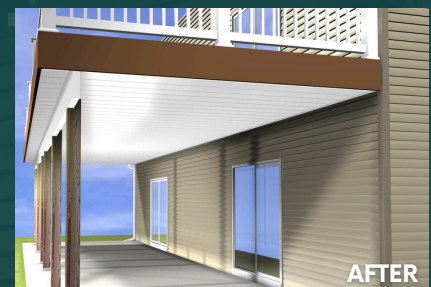
Developed in the early 2000s and driven by MP Global Products since 2010, it now partners with NCP Industries for sales and marketing support. **Zip•UP Ceilings® and UnderDeck®** has become a leader in underdeck drainage and ceiling finishes, providing durable, dry, and visually appealing solutions for overhead spaces.

KEY FEATURES:

- **Dual Functionality:** Water drainage and finished ceiling system in one easy install.
- **Easy Maintenance:** Removable panels for quick mechanical access and upkeep.
- **Versatile Applications:** Works on new and existing decks, or interior ceiling applications.
- **Durable:** Easy to clean PVC, won't rust or corrode, Hurricane & Class-A Fire Rated.
- **Lifetime Warranty:** Quality you can trust with a lifetime guarantee.



BEFORE



AFTER

CHECK OUT OUR ONLINE RESOURCES



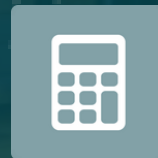
**Where
To Buy**



**Find An
Installer**



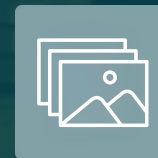
**Installation
Guide**



**Materials
Calculator**



**CAD
Specs**



**Project
Gallery**



**Contractor
Rebate**

www.ZipUPCeilings.com

COLORS & PROFILES



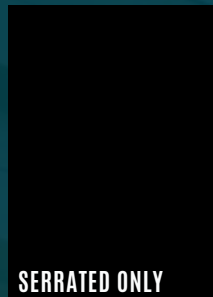
WHITE



BEIGE



GRAY



SERRATED ONLY
BLACK



BEACHWOOD



COASTAL SEQUOIA



SERRATED



SMOOTH



WHITE ONLY

CAPE COD

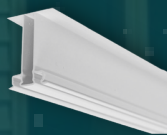
INSTALLS QUICKLY USING MINIMAL PARTS & PIECES



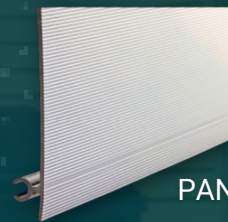
PITCH RAIL



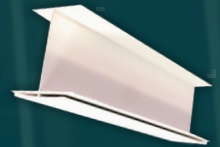
WALL TRIM



MAIN RAIL



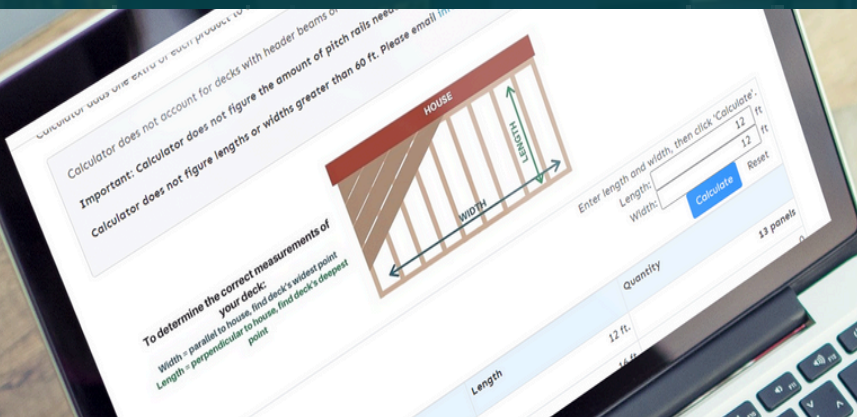
PANEL



SEAM TRIM

AVAILABLE IN 12' OR 16' LENGTHS

AVAILABLE FOR LENGTHS OVER 16'

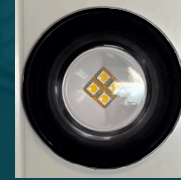


*Customized to Your Deck Size
in Just a Few Simple Steps*

NEW FROM NCP OUTDOOR LUMADOME LOW VOLTAGE ZIP-UP UNDERDECK® LIGHT KIT



- **Waterproof:** Patent-pending technology keeps electrical components watertight and waterproof.
- **Easy to Install:** Does not require electrical installation, plugs into any 120V power source.
- **Versatile Applications:** Works on new and existing decks, or interior ceilings.
- **Smart Technology:** Can operate up to 50 low-voltage lights, Bluetooth, and Wi-Fi compatible.



BLACK



WHITE

AVAILABLE IN 9 PACK STARTER KITS &
4 PACK EXTENSION KITS



SEND YOUR JOBSITE PHOTOS TO [INFO@ZIPUPCEILINGS.COM](mailto:info@zipupceilings.com)



Questions?
Give us a call! 888-379-2210

info@zipupceilings.com | www.ZipUPCeilings.com